

The Benefits of a Solid-State Electricity Meter

- Reliable, Accurate Metering
- Cost-Effective
- Convenient
- Easy To Install



Accurate, Reliable Solid-State Technology

The Intellimeter Register is a convenient, cost-effective, solid-state demand meter that measures and records electrical energy usage in tenant monitoring applications such as commercial buildings, shopping malls, airports and other multiple point operations. The Register provides accurate and reliable information to help you manage electricity expenses.

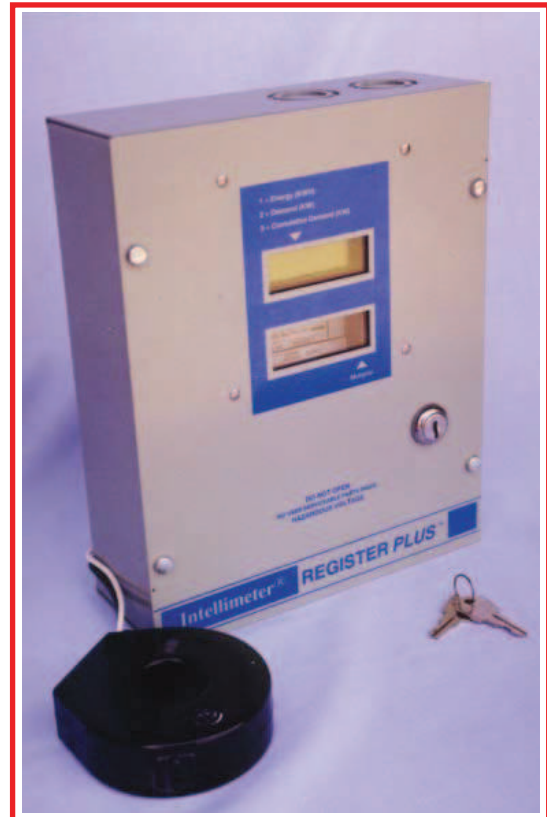
The Register has a local backlighted dial display for on-site reading and may be optionally equipped with a pulse output for remote reading by an energy management system. The pulse output is compatible with the Intellimeter System.

Easy to Install and Use

The Register is easily installed next to the electrical lines supplying the load to be measured. Tap into the voltage, install the solid or split-core current transformers around the wires carrying current to the load and the job is complete. No rewiring or meter sockets are necessary and you can install the Register without interrupting service to the rest of the building. Register models are available for use with conventional 5 Amp output current transformers or low-cost 0.1 Amp output current transformers.

Flexible and Convenient

The Register is factory set to measure the kWh consumption. At your option, it can be configured to display Peak kW Demand and Cumulative kW Demand. You select the demand interval according to your needs. Any reset of the peak demand will add to the cumulative demand reading, preserving the demand reading.



A Typical Register with CT

Plain English Self-Diagnostics

The Register routinely performs self-diagnostic tests on critical internal components and the wiring to which it is attached. If a problem is detected, the Register displays the word "HELP" in plain English followed by a code that describes the problem. This feature facilitates installation, maintenance and any necessary repairs.

Visit Us On The Web

<http://www.osc-intellimeter.com>
e-mail: sales@osc-intellimeter.com

Features

- Easy installation
- UL listed, complies with FCC rules and regulations
- Automatic self test and diagnostics
- Sealable
- Nonvolatile memory - no battery required
- Models compatible with most current transformers, including split core types
- Readout: LCD display on face of meter; 6-digit dials, backlit
- Easy to use multipliers - same for kWh and kW
- Test displays - horizontal bar toggles with Kp, vertical bar toggles with 10x Kp

SPECIFICATIONS

- Power Factor** Accurate at any
- Temperature** - 20°C to +50°C
- Humidity** 0-95%, non-condensing
- Accuracy** Exceeds ANSI C12.1
- Memory** Nonvolatile EEPROM
- Burdens** 7VA max overall, 0.1VA current circuit
- Approvals** CUL 1244, FCC Part 15 Class B
- Enclosure** 8"W x 10"H x 3"D
- Readout** LCD (Backlight)
- Current Transformers**... 5A secondary (Class 10 meter)
Optional..... 0.1A secondary
- Options** Demand/Cumulative Demand,
KYZ, Form C or Form A pulse output,
6000 pulses/hr at Full Scale

MODEL SELECTION

ELECTRICAL SERVICE	5A MODEL	0.1A MODEL
120V, 1Φ2W	RG2-120	RG2-120.1
3-Wire High-Voltage with Voltage Transformers	RG2-120	RG2-120.1
120/208V 3-Wire Network	RG2-208	RG2-208.1
208V 3-Wire Ungrounded	RG2-208	RG2-208.1
120/208V 4-Wire Wye	RG2-208	RG2-208.1
120/240V 1Φ3W	RG2-240	RG2-240.1
240V 2-Wire Delta	RG2-240	RG2-240.1
240V 3-Wire Delta	RG2-240	RG2-240.1
240V 4-Wire Delta	RG2-240	RG2-240.1
480V 3-Wire Delta	RG2-480	RG2-480.1
277/480V 4-Wire Wye	RG2-480	RG2-480.1

Sample Readout

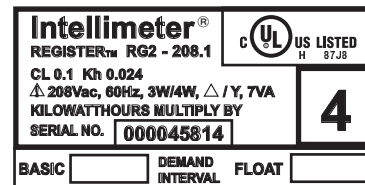
This sample shows how easy and straight-forward the Register's LCD display is to read.

Metering Display

- 1 = Energy
- 2 = Demand
- 3 = Cumulative demand

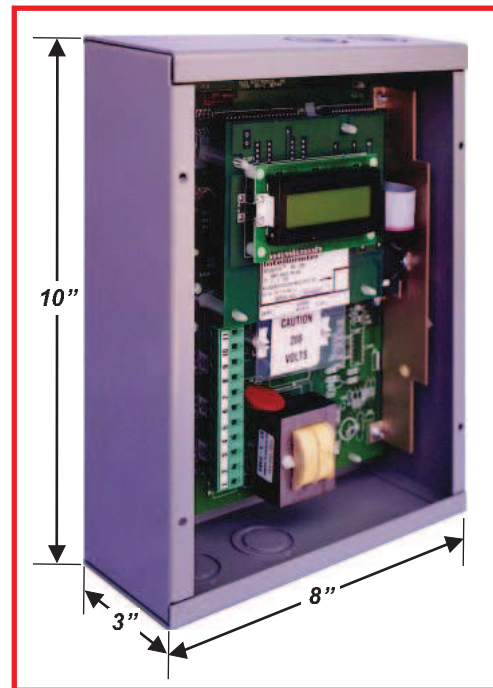
1 000203

This month's reading



Meter class and multiplier

203	This month's reading
- 22	Last month's reading
181	Tenant's consumption
181	Tenant's consumption
x 4	Multiplier
724	kWh
724	kWh
X 0.11203	Cost per kWh
\$81.11	Tenant's bill



Enclosure Dimensions