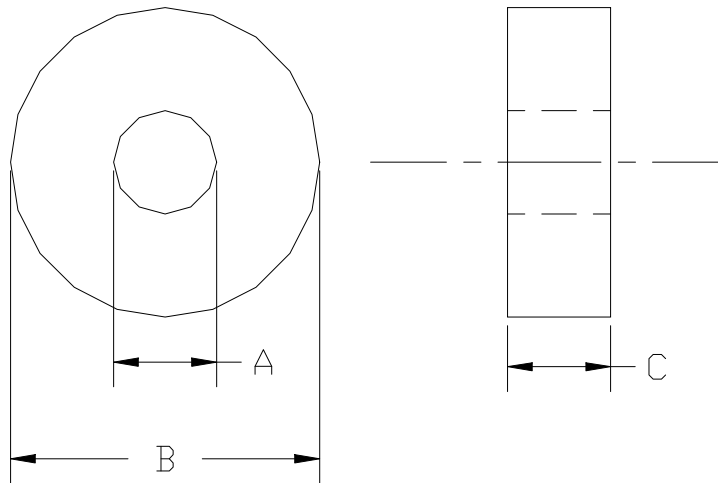


INTELLIMETER**CURRENT TRANSFORMERS**TYPICAL DIMENSIONS (in)

PART NUMBER	CLASS	COLOR	A	B	C
805042	100:0.1A	RED	0.75∇	2.25∇	0.75∇
805043	200:0.1A	YELLOW	0.75∇	2.25∇	0.75∇
805074	400:0.1A	BLACK	1.5∇	2.9∇	1.0∇
450252*	PREWRAP	RED	0.75∇	2.25∇	0.75∇

Secondary Leads (72 in.) – yellow Lead (negative), black Lead (positive)

Polarization – Arrow indicates line-to-load direction.

Current Transformer Secondary Protection – 10 volts maximum output: shunt not required

Coating/Housing – UL Recognized material, rated min. 600V, 105°C

*NOTE: For applications over 400 amps, interface meter grade current transformers with Intellimeter 10 turn Prewrap current transformer (#450252).