

# OSI SPLIT-CORE CURRENT TRANSFORMER MODEL CTY-XXX .1

## 0.30% Metering Class Low Cost

### DESCRIPTION

The CTY Series of current transformers are designed to provide highly repeatable ac current measurement. The split-core design makes installation on an existing circuit simple.

The output of the CTY is 0.1Aac which is proportional to the current input. The output voltage is limited to less than 8Vac by an internal voltage clamping circuit. This feature enables the CT secondary to be opened

safely without disconnecting the primary from the mains.

Each unit is individually calibrated to provide an overall metering class accuracy of 0.30%.

### INSTALLATION

Before installing, turn off all associated power sources. Separate the transformer by opening the Velcro strap.

MODEL	INPUT AC AMPS	DIMENSIONS in inches					WT. LBS.
		A	B	C	D	E	
CTY-050A-.1	0-50	2.75	1.70	1.12	0.90	0.90	0.4
CTY-100A-.1	0-100	2.75	1.70	1.12	0.90	0.90	0.4
CTY-200A-.1	0-200	2.75	1.70	1.12	0.90	0.90	0.4
CTY-200B-.1	0-200	3.65	3.60	1.20	2.40	1.60	0.8
CTY-300B-.1	0-300	3.65	3.60	1.20	2.40	1.60	0.8
CTY-400B-.1	0-400	3.65	3.60	1.20	2.40	1.60	0.8
CTY-500B-.1	0-500	3.65	3.60	1.20	2.40	1.60	0.8
CTY-600B-.1	0-600	3.65	3.60	1.20	2.40	1.60	0.8
CTY-800B-.1	0-800	3.65	3.60	1.20	2.40	1.60	0.8
CTY-800C-.1	0-800	5.53	4.50	1.20	3.15	3.25	1.5
CTY-1000C-.1	0-1000	5.53	4.50	1.20	3.15	3.25	1.5
CTY-1200C-.1	0-1200	5.53	4.50	1.20	3.15	3.25	1.5
CTY-1200D-.1	0-1200	6.60	12.60	1.20	11.00	4.00	5.2
CTY-1500C-.1	0-1500	5.53	4.50	1.20	3.15	3.25	1.5
CTY-1500D-.1	0-1500	6.60	12.60	1.20	11.00	4.00	5.2
CTY-2000C-.1	0-2000	5.53	4.50	1.20	3.15	3.25	1.5
CTY-2000D-.1	0-2000	6.60	12.60	1.20	11.00	4.00	5.2
CTY-2500C-.1	0-2500	5.53	4.50	1.20	3.15	3.25	1.5
CTY-2500D-.1	0-2500	6.60	12.60	1.20	11.00	4.00	5.2

### SPECIFICATIONS

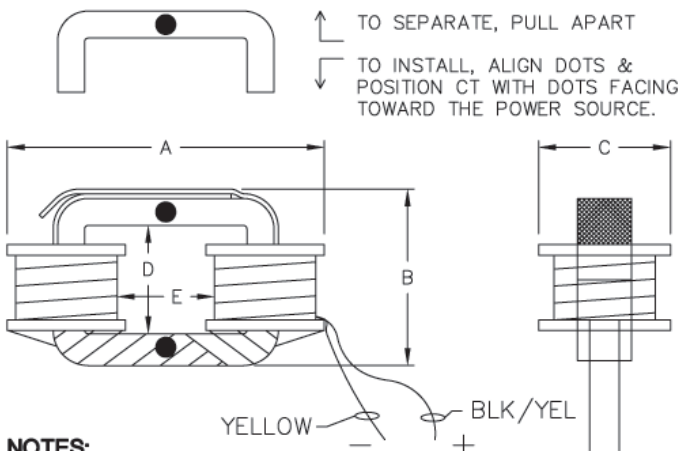
#### INPUT:

Current (Primary)..... See Table

#### OUTPUT:

Current (Secondary).....0.1Aac  
 Burden.....10 Ohms Max. Resistive  
 Frequency..... 60Hz  
 Accuracy.....0.3% Metering Class  
 Phase..... Compensated for less than  
 ±30 minutes of arc with 10 ohm load at 60Hz.

### SENSOR DIMENSIONS



- NOTES:**
1. LEAD LENGTH - 120"
  2. DIMENSION IN INCHES